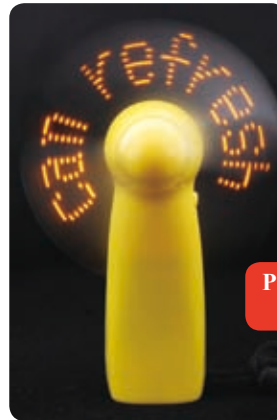


04 LED PRODUCTS



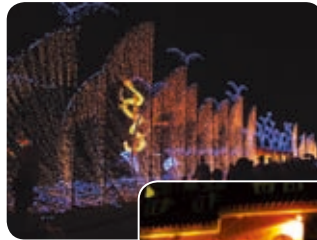
Price: ≤ \$0.32 / pc
on P326



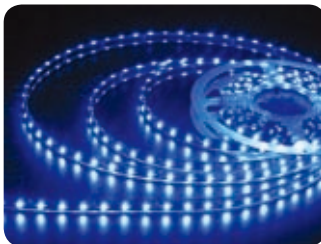
Price: ≤ \$2.88 / pc
on P317



Price: ≤ \$1.39 / pc
on P327



Price: ≤ \$3.88 / pc
on P317



- P314 | LED Innovative Products
- P319 | LED Full Color Screen
- P323 | LED Scrolling Sign
- P326 | LED Modules

- P329 | Decorative Light
 - P329 | Decorative light
 - P333 | Rope light string
 - P335 | LED strip

> LED Innovative Products

LED Advertising Message Fan

- LED advertising message fan using the rotating feature of its cleverly.
- For the persistence of human vision, the fan can display some message letters or patterns during it's working / running / rotating.
- As a novel advertising gift, it is welcomed by both women and men.
- By displaying letters on fans and printing company logo on the handle make it more attractive than normal advertising gifts.
- What's more we design various types for customer.



| Model | Name | Light Qty | Display Content |
|-------------------|--|-----------|---|
| FS-SZTB-TBD108-5 | Portable Mini LED Fan | | |
| FS-SZTB-TBD158-5 | USB LED Message Fan-with ON / OFF Switch | 5 LEDS | Design any Capital English letters, numbers or common punctuation marks, etc. |
| FS-SZTB-TBD168-5 | USB Desktop LED Message Fan | | |
| FS-SZTB-TBD108-7 | Portable Mini LED Fan | | |
| FS-SZTB-TBD158-7 | USB LED Message Fan-with ON / OFF Switch | 7 LEDS | Design any European letters, numbers, common punctuation marks and simple patterns etc. Four different messages can be shown, 14 - 16 letters for each message. |
| FS-SZTB-TBD168-7 | USB Desktop LED Message Fan | | |
| FS-SZTB-TBD108-9 | Portable Mini LED Fan | | |
| FS-SZTB-TBD158-9 | USB LED Message Fan-with ON / OFF Switch | 9 LEDS | Design any European letters, Japanese, Korean, numbers, common punctuation marks and simple patterns, etc. Four different messages can be shown 14 - 16 letters for each message. Four different messages can be shown, 14 - 16 letters for each message. |
| FS-SZTB-TBD168-9 | USB Desktop LED Message Fan | | |
| FS-SZTB-TBD108-11 | Portable Mini LED Fan | | |
| FS-SZTB-TBD158-11 | USB LED Message Fan-with ON / OFF Switch | 11 LEDS | Design any European letters, Japanese, Korean, Thai, numbers, common punctuation marks and simple patterns, etc. Four different messages can be shown, 14 - 16 letters for each message. |
| FS-SZTB-TBD168-11 | USB Desktop LED Message Fan | | |
| FS-SZTB-TBD108-16 | Portable Mini LED Fan | | |
| FS-SZTB-TBD168-16 | USB Desktop LED Message Fan | 16 LEDS | Design any words or simple patterns, including European letter, Simple Chinese, Complicated Chinese, Japanese, Korean, Thai and company logo, etc. Four different messages can be shown, 14 - 16 letters for each message. |

> LED Innovative Products

Portable Mini LED Fan

▼ Specifications

Product Size: 11cm x 3.5cm x 5cm (4.3" x 1.4" x 2")**Carton Size:** 11.5cm x 5cm x 4.5cm (4.5" x 2" x 1.8")**Product Weight:** 60g**Power:** 3pcs AAA battery**Packing Size:** 54.3cm x 48.8cm x 28cm
(21.4" x 19"x 11")**Qty / Carton:** 200pcs**N.W.:** 12.2kgs**G.W.:** 14.1kgs

▼ Price List

| Model | Light Qty | Light Color | MOQ | 0.5k-1k | 1k-2k | 2k-3k |
|-------------------|-----------|-------------|--------|-------------|-------------|-------------|
| FS-SZTB-TBD108-5 | 5 | Red | 500pcs | \$1.38 / pc | \$1.33 / pc | \$1.28 / pc |
| | 5 | Blue | 500pcs | \$1.52 / pc | \$1.49 / pc | \$1.42 / pc |
| | 5 | Green | 500pcs | \$1.55 / pc | \$1.50 / pc | \$1.45 / pc |
| FS-SZTB-TBD108-7 | 7 | Red | 500pcs | \$1.44 / pc | \$1.39 / pc | \$1.34 / pc |
| | 7 | Blue | 500pcs | \$1.62 / pc | \$1.57 / pc | \$1.52 / pc |
| | 7 | Green | 500pcs | \$1.65 / pc | \$1.60 / pc | \$1.55 / pc |
| FS-SZTB-TBD108-9 | 9 | Red | 500pcs | \$1.56 / pc | \$1.51 / pc | \$1.46 / pc |
| | 9 | Blue | 500pcs | \$1.82 / pc | \$1.77 / pc | \$1.72 / pc |
| | 9 | Green | 500pcs | \$1.83 / pc | \$1.78 / pc | \$1.73 / pc |
| FS-SZTB-TBD108-11 | 11 | Red | 500pcs | \$1.61 / pc | \$1.56 / pc | \$1.51 / pc |
| | 11 | Blue | 500pcs | \$1.92 / pc | \$1.87 / pc | \$1.82 / pc |
| | 11 | Green | 500pcs | \$1.94 / pc | \$1.89 / pc | \$1.84 / pc |
| FS-SZTB-TBD108-16 | 16 | Red | 500pcs | \$2.25 / pc | \$2.20 / pc | \$2.15 / pc |
| | 16 | Blue | 500pcs | \$2.51 / pc | \$2.46 / pc | \$2.41 / pc |
| | 16 | Green | 500pcs | \$2.94 / pc | \$2.89 / pc | \$2.84 / pc |

**USB Desktop LED Message Fan**

▼ Specifications

Product Size: 9cm x 10cm x 26.3cm (3.5" x 3.9" x 10.4")**Package Size:** 8.5cm x 8.5cm x 10.5cm (3.3" x 3.3" x 4.1")**Power:** USB or 3pcs AAA battery**Product Weight:** 150g**Carton Size:** 45.5cm x 45.5cm x 47cm (17.9" x 17.9" x 18.5")**Qty / Carton:** 100pcs**N.W.:** 15kg**G.W.:** 17kg

▼ Price List

| Model | Light Qty | Light Color | MOQ | 1k-2k | 2k-5k | 5k-10k |
|-------------------|-----------|-------------|---------|-------------|-------------|-------------|
| FS-SZTB-TBD168-5 | 5 | Red | 1000pcs | \$2.63 / pc | \$2.60 / pc | \$2.57 / pc |
| | 5 | Blue | 1000pcs | \$2.76 / pc | \$2.73 / pc | \$2.70 / pc |
| | 5 | Green | 1000pcs | \$2.78 / pc | \$2.75 / pc | \$2.72 / pc |
| FS-SZTB-TBD168-7 | 7 | Red | 1000pcs | \$2.66 / pc | \$2.63 / pc | \$2.60 / pc |
| | 7 | Blue | 1000pcs | \$2.85 / pc | \$2.82 / pc | \$2.79 / pc |
| | 7 | Green | 1000pcs | \$2.88 / pc | \$2.85 / pc | \$2.82 / pc |
| FS-SZTB-TBD168-9 | 9 | Red | 1000pcs | \$2.76 / pc | \$2.73 / pc | \$2.70 / pc |
| | 9 | Blue | 1000pcs | \$2.95 / pc | \$2.92 / pc | \$2.89 / pc |
| | 9 | Green | 1000pcs | \$2.98 / pc | \$2.95 / pc | \$2.92 / pc |
| FS-SZTB-TBD168-11 | 11 | Red | 1000pcs | \$2.79 / pc | \$2.76 / pc | \$2.73 / pc |
| | 11 | Blue | 1000pcs | \$3.11 / pc | \$3.08 / pc | \$3.05 / pc |
| | 11 | Green | 1000pcs | \$3.12 / pc | \$3.09 / pc | \$3.06 / pc |
| FS-SZTB-TBD168-16 | 16 | Red | 1000pcs | \$3.20 / pc | \$3.17 / pc | \$3.14 / pc |
| | 16 | Blue | 1000pcs | \$3.47 / pc | \$3.44 / pc | \$3.41 / pc |
| | 16 | Green | 1000pcs | \$3.90 / pc | \$3.87 / pc | \$3.84 / pc |

> LED Innovative Products

USB LED Message Fan



▼ Specifications

Product Size: 33.2cm x 3.3cm x 2.6cm (13" x 1.3" x 1")

Carton Size: 11.5cm x 5cm x 4.5cm (4.3" x 2" x 1.8")

Product Weight: 58.6g

Power: USB

Packing Size: 54.3cm x 48.8cm x 28cm
(21.4" x 19.2" x 11")

Qty / Carton: 200pcs

N.W.: 13.72kgs

G.W.: 15.62kgs



▼ Price List

| Model | Light Qty | Light Color | MOQ | 0.5k-1k | 1k-2k | 2k-3k |
|-------------------|-----------|-------------|--------|-------------|-------------|-------------|
| FS-SZTB-TBD158-5 | 5 | Red | 500pcs | \$2.54 / pc | \$2.51 / pc | \$2.48 / pc |
| | 5 | Blue | 500pcs | \$2.67 / pc | \$2.64 / pc | \$2.61 / pc |
| | 5 | Green | 500pcs | \$2.69 / pc | \$2.66 / pc | \$2.63 / pc |
| FS-SZTB-TBD158-7 | 7 | Red | 500pcs | \$2.57 / pc | \$1.39 / pc | \$1.34 / pc |
| | 7 | Blue | 500pcs | \$2.76 / pc | \$2.73 / pc | \$2.70 / pc |
| | 7 | Green | 500pcs | \$2.79 / pc | \$2.76 / pc | \$2.73 / pc |
| FS-SZTB-TBD158-9 | 9 | Red | 500pcs | \$2.82 / pc | \$2.79 / pc | \$2.76 / pc |
| | 9 | Blue | 500pcs | \$3.08 / pc | \$3.05 / pc | \$3.02 / pc |
| | 9 | Green | 500pcs | \$3.09 / pc | \$3.06 / pc | \$3.03 / pc |
| FS-SZTB-TBD158-11 | 11 | Red | 500pcs | \$2.85 / pc | \$2.82 / pc | \$2.79 / pc |
| | 11 | Blue | 500pcs | \$3.17 / pc | \$3.14 / pc | \$3.11 / pc |
| | 11 | Green | 500pcs | \$3.18 / pc | \$3.15 / pc | \$3.12 / pc |

LED Flashing Mobile Phone Chains

- It is a new kind of LED flashing mobile phone chains. Based on the theory of persistence of vision, it would seem like fluorescent words or figures only by swaying or twirling it, and different speeds, rhythms, or waving ways would produce different effects.
- Smart but clear.
- The background picture could be changed.
- Different display effects including Chinese, English, Korean, Japanese or French versions for your choice.
- One intellectual button makes it easy to operate.
- Can be used 500 minutes consecutively.



▼ Price List

| Model | Light Color | MOQ | Unit Price |
|----------------|-------------|--------|-------------|
| MS-LZYW-602R-3 | Red | 100pcs | \$4.24 / pc |
| MS-LZYW-602G-3 | Green | 100pcs | \$4.54 / pc |
| MS-LZYW-602B-3 | Blue | 100pcs | \$4.84 / pc |



> LED Innovative Products

PC Input LED Message Fan

- It is a personalized gift which can change the flashing letters by connecting computer.
- The advertising contents can only be changed by USB cable. The oretical changing time can be up to 10,000 times.
- One data line could work for many PC input led mini fans.

**PC Input Portable Mini LED Message Fan****▼ Specifications****Product Size:** 11cm x 3.5cm x 5cm (4.3" x 1.4" x 2")**Carton Size:** 11.5cm x 5cm x 4.5cm (4.5" x 2" x 1.8")**Product Weight:** 60g**Power:** 3pcs AAA battery**Packing Size:** 54.3cm x 48.8cm x 28cm
(21.4" x 19.2" x 11")**Qty / Carton:** 200pcs**N.W.:** 12.6kgs**G.W.:** 14.5kgs**▼ Price List**

| Model | Light Qty | Light Color | MOQ | 0.5k-1k | 1k-2k | 2k-3k |
|-------------------|-----------|-------------|--------|-------------|-------------|-------------|
| FS-SZTB-TBD128-7 | 7 | Red | 500pcs | \$2.88 / pc | \$2.85 / pc | \$2.82 / pc |
| | 7 | Blue | 500pcs | \$3.08 / pc | \$3.03 / pc | \$3.00 / pc |
| | 7 | Green | 500pcs | \$3.21 / pc | \$3.18 / pc | \$3.15 / pc |
| FS-SZTB-TBD128-11 | 11 | Red | 500pcs | \$3.50 / pc | \$3.40 / pc | \$3.30 / pc |
| | 11 | Blue | 500pcs | \$3.90 / pc | \$3.80 / pc | \$3.70 / pc |
| | 11 | Green | 500pcs | \$3.90 / pc | \$3.80 / pc | \$3.70 / pc |

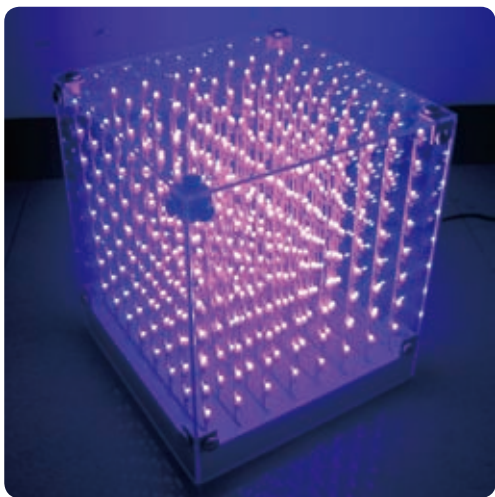
**PC Input USB LED Message Fan****▼ Specifications****Product Size:** 33.2cm x 3.3cm x 2.6cm (13" x 1.3" x 1")**Carton Size:** 11.5cm x 5cm x 4.5cm (4.5" x 2" x 1.8")**Product Weight:** 58.6g**Power:** USB**Packing Size:** 54.3cm x 48.8cm x 28cm (21.4" x 19.2" x 11")**Qty / Carton:** 200pcs**N.W.:** 13.72kgs**G.W.:** 15.62kgs**▼ Price List**

| Model | Light Qty | Light Color | MOQ | 0.5k-1k | 1k-2k | 2k-3k |
|-------------------|-----------|-------------|--------|-------------|-------------|-------------|
| FS-SZTB-TBD148-7 | 7 | Red | 500pcs | \$3.88 / pc | \$3.85 / pc | \$3.82 / pc |
| | 7 | Blue | 500pcs | \$4.08 / pc | \$4.03 / pc | \$4.00 / pc |
| | 7 | Green | 500pcs | \$4.21 / pc | \$4.18 / pc | \$4.15 / pc |
| FS-SZTB-TBD148-11 | 11 | Red | 500pcs | \$4.50 / pc | \$4.40 / pc | \$4.30 / pc |
| | 11 | Blue | 500pcs | \$4.90 / pc | \$4.80 / pc | \$4.70 / pc |
| | 11 | Green | 500pcs | \$4.90 / pc | \$4.80 / pc | \$4.70 / pc |

> LED Innovative Products

3D LED Display Screen

- Indoor laying 3D full color display screen, it is widely used for the decoration of hotels and exhibitions showcase lighting, the amusement for bars and night show stages with its special 3D animation effects.
- Can display letters, solid figures and pictures with 3D animation effects in 8 x 8 x 8 / 16 x 16 x 16 pixels in an all - directional way.
- Can work synchronous or by SD card controller for its flexibility.
- Creative, flexible, full of imagination and easy to install.

**3D-SEEKWAY-A08****▼ Specifications****Product Size:** 25cm x 25cm x 31cm (9.8" x 9.8" x 12.2")**Voltage:** AC110V-AC230V**Package:** Carton**Illuminant:** Highly luminous LED, totally 8 x 8 x 8 + 7 x 7 x 7**N.W.:** 5kgs**▼ Price List**

| Model | Pixel Qty | Light Color | MOQ | Price |
|----------------|-----------|-------------|------|------------|
| 3D-Seekway-A08 | 512 | Full color | 1pcs | \$510 / pc |

3D-SEEKWAY-A16**▼ Specifications****Product Size:** 70cm x 70cm x 70cm (27.6" x 27.6" x 27.6")**Voltage:** AC110V-AC230V**Package:** Aviation box for transportation**Accessories:** Monitors, power supply, controller and software**Illuminant:** Highly luminous LED in 16 x 16 x 16 pixels**N.W.:** 50kgs**▼ Price List**

| Model | Pixel Qty | Light Color | MOQ | Price |
|----------------|-----------|-------------|------|--------------|
| 3D-Seekway-A16 | 4096 | Full color | 1pcs | \$4,550 / pc |

**3D-Seekway C08****▼ Specifications****Product Size:** 130cm x 122cm x 135cm (51" x 48" x 53")**Voltage:** AC220V**Package:** Aviation box for transportation**Accessories:** Monitors, power supply, controller and software**Illuminant:** Highly luminous LED in 8 x 8 x 8 pixels**N.W.:** 20kgs**▼ Price List**

| Model | Pixel Qty | Light Color | MOQ | Price |
|----------------|-----------|-------------|------|--------------|
| 3D-Seekway C08 | 512 | Full color | 1pcs | \$4,200 / pc |



About LED Screen

The factors you should consider when choosing LED screen:

- Displaying content.
- Best viewing distance and viewing angle.
- Requirement on pixel pitch.
- Setting environment (IP grade).

Indoors: With the pixel pitch from 3mm (0.12") to 12mm (0.47"), non - waterproof.

Outdoors: With the pixel pitch from 16mm (0.63") to 31.25mm (1.23"), waterproof.

Screen with **low density of pixel** is more suitable for viewing in longer distance.

Screen with **high density of pixel** is more suitable for viewing in shorter distance.

How to choose the screen with the right size?

- Choosing the screen with the best viewing distance which could match the dimensions of your court (Where you set the screen).
- Choosing the right pixel pitch.
- Reserving enough space for setting and maintaining is necessary.

How to choose the screen with the right physical density?

- **For displaying characters:** Choosing based on the size of the displaying characters and resolution of module.
- **For displaying common video:** 320 x 240 pixels
- **For displaying standard digital DVD:** $\geq 640 \times 480$ pixel
- **For displaying computer video:** $\geq 800 \times 600$ pixel

The requirement on the brightness of environment:

Indoor: $> 800\text{CD} / \text{M}^2$

Semi outdoor (Indoor but near the window): $> 2000\text{CD} / \text{M}^2$

Outdoor (Facing to the north): $> 4000\text{CD} / \text{M}^2$

Outdoor (Facing to the south): $> 8000\text{CD} / \text{M}^2$

You could choose different screens based on your own budget.



> LED Full Color Screen

DIP Full Color LED Screen

Full Color LED Screen - DIP means to drill through the PCB board with the bases of lamps encapsulated by DIP, and fill the lamp hole with tin by welding.

Those manufactured by this technical process are called lamp - inserted displays.

- The DIP LED display screen is of high brightness.
- Good heat dissipation.
- Perfect for outdoor message display.

**P10 LED Dip Lamp Full Color Screen**

▼ Price List

| Pixel Pitch | MOQ | Use Environment | Unit Price |
|-------------|-----------------|-----------------|----------------------------|
| 10mm (0.4") | 1m ² | Outdoor | ≤ \$2,000 / m ² |

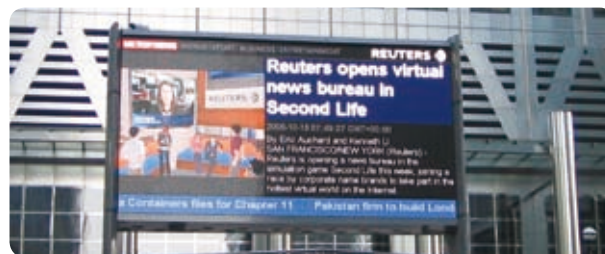
▼ Specifications

| | | | |
|---------------------------|----------------------------|--------------------------|--|
| Pixel Pitch | 10mm (0.4") | Size of Module | 160mm x 80mm (6.3" x 3.1") |
| Resolution of Module | 16 x 8 | Size of Cabinet | 640mm x 480mm x 140mm (25.2" x 18.9" x 5.5") |
| Resolution of Cabinet | 64 x 48 | Pixel Configuration | 1R1G1B |
| Density of Pixel | 10000dots / m ² | Green Wavelength | 525 ± 2nm |
| Red Wavelength | 625 ± 2nm | Colors | 16777216 |
| Blue Wavelength | 470 ± 2nm | Horizontal Viewing Angle | 120° |
| Best Viewing Distance | 12 - 120m | Brightness | ≥ 7000cd / m ² |
| Maximum Power Consumption | ≤ 2000W / m ² | Gray Scale | 256 levels per color |
| IP Grade | IP65 | Control Method | Synchronization |
| Color Temperature | 6500K | Frame Frequency | 60Hz |
| Driving Method | Constant 1 / 2 scanning | Working Voltage | AC 220V / 110V ± 10% |
| Refresh Frequency | ≥ 300Hz | MTBF | More than 10,000 hours |
| Working Temperature | -20°C ~ +60°C | Life Span | 100,000 hours |

P12 LED Dip Lamp Full Color Screen

▼ Price List

| Pixel Pitch | MOQ | Use Environment | Unit Price |
|-------------|-----------------|-----------------|----------------------------|
| 12mm (0.5") | 1m ² | Outdoor | ≤ \$1,800 / m ² |



▼ Specifications

| | | | |
|---------------------------|---------------------------|--------------------------|--|
| Pixel Pitch | 12mm (0.47") | Size of Module | 192mm x 96mm (7.6" x 3.8") |
| Resolution of Module | 16 x 8 | Size of Cabinet | 768mm x 576mm x 140mm (30" x 22.7" x 5.5") |
| Resolution of Cabinet | 64 x 48 | Pixel Configuration | 1R1G1B |
| Density of Pixel | 6944dots / m ² | Green Wavelength | 525 ± 2nm |
| Red Wavelength | 625 ± 2nm | Colors | 16777216 |
| Blue Wavelength | 470 ± 2nm | Horizontal Viewing Angle | 120° |
| Best Viewing Distance | 12 - 120m | Brightness | ≥ 7000cd / m ² |
| Maximum Power Consumption | ≤ 2000W / m ² | Gray Scale | 256 levels per color |
| IP Grade | IP65 | Control Method | Synchronization |
| Color Temperature | 6500K | Frame Frequency | 60Hz |
| Driving Method | Constant 1 / 2 Scanning | Working Voltage | AC 220V / 110V ± 10% |
| Refresh Frequency | ≥ 300Hz | MTBF | More than 10,000 hours |
| Working Temperature | -20°C ~ +60°C | Life Span | 100,000 hours |

> LED Full Color Screen

DIP Full Color LED Screen

Full Color LED Screen - DIP means to drill through the PCB board with the bases of lamps encapsulated by DIP, and fill the lamp hole with tin by welding.

Those manufactured by this technical process are called lamp - inserted displays.

- The DIP LED display screen is with high brightness.
- Good heat dissipation.
- Perfect for outdoor message display.



P16 LED DIP Lamp Full Color Screen



▼ Price List

| Pixel Pitch | MOQ | Use Environment | Unit Price |
|-------------|-----------------|-----------------|----------------------------|
| 16mm (0.6") | 1m ² | Outdoor | ≤ \$1,500 / m ² |

▼ Specifications

| | | | |
|---------------------------|---------------------------|--------------------------|---|
| Pixel Pitch | 16mm (0.63") | Size of Module | 256mm x 256mm (10" x 10") |
| Resolution of Module | 16 x 16 | Size of Cabinet | 512mm x 512mm x 120mm (20" x 20" x 4.7") |
| Resolution of Cabinet | 32 x 32 | Pixel Configuration | 1R1G1B |
| Density of Pixel | 3906dots / m ² | Green Wavelength | 525 ± 2nm |
| Red Wavelength | 625 ± 2nm | Colors | 16777216 |
| Blue Wavelength | 470 ± 2nm | Horizontal Viewing Angle | 120° |
| Best Viewing Distance | 15 - 300m | Brightness | ≥ 6500cd / m ² |
| Maximum Power Consumption | ≤ 1200W / m ² | Gray Scale | 256 levels per color |
| IP Grade | IP65 | Control Method | Synchronization |
| Color Temperature | 6500K | Frame Frequency | 60Hz |
| Driving Method | Constant static | Working Voltage | AC 220V / 110V ± 10% |
| Refresh Frequency | ≥ 300Hz | MTBF | More than 10,000 hours |
| Working Temperature | -20°C ~ +60°C | Life Span | 100,000 hours |

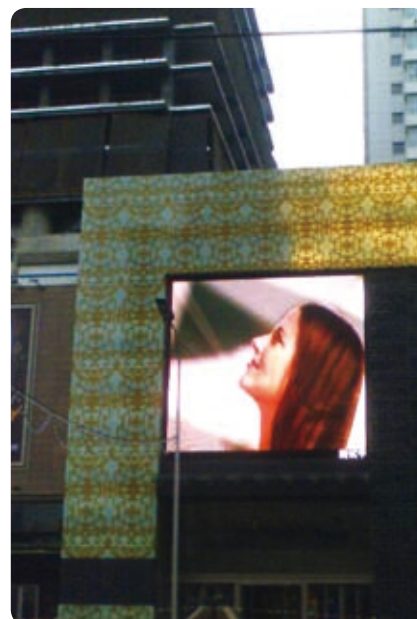
P20 LED DIP Lamp Full Color Screen

▼ Price List

| Pixel Pitch | MOQ | Use Environment | Unit Price |
|-------------|-----------------|-----------------|----------------------------|
| 20mm (0.8") | 1m ² | Outdoor | ≤ \$1,350 / m ² |

▼ Specifications

| | | | |
|---------------------------|----------------------------|--------------------------|---|
| Pixel Pitch | 20mm (0.8") | Size of Module | 320mm x 320mm (12.6" x 12.6") |
| Resolution of Module | 16 x 16 | Size of Cabinet | 640mm x 640mm x 120mm (25.2" x 25.2" x 4.7") |
| Resolution of Cabinet | 32 x 32 | Pixel Configuration | 1R1G1B |
| Density of Pixel | 2500 dots / m ² | Green Wavelength | 525 ± 2nm |
| Red Wavelength | 625 ± 2nm | Colors | 16777216 |
| Blue Wavelength | 470 ± 2nm | Horizontal Viewing Angle | 120° |
| Best viewing Distance | 15 - 300m | Brightness | ≥ 5500 cd / m ² |
| Maximum Power Consumption | ≤ 1100W / m ² | Gray Scale | 256 levels per color |
| IP Grade | IP65 | Control Method | Synchronization |
| Color Temperature | 6500K | Frame Frequency | 60Hz |
| Driving Method | Constant static | Working Voltage | AC 220V / 110V ± 10% |
| Refresh Frequency | ≥ 300Hz | MTBF | More than 10,000 hours |
| Working Temperature | -20°C ~ +60°C | Life Span | 100,000 hours |



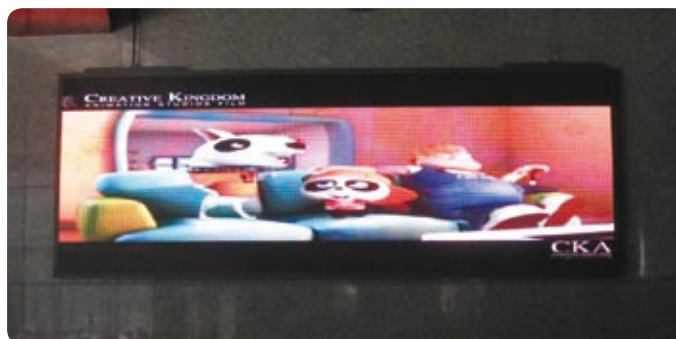
> LED Full Color Screen

Integrated Three - in - one Full Color LED Screen

This series of LED screens are called 3 in 1 Dot Matrix True Color Module LED Screen.

Each pixel of the module is made up of three LED chips (high brightness pure red and pure green and pure blue), they are bound by Ultrasonic AI Wire Bonder and each module is composed of 4 x 4 or 8 x 8 pixels.

- Big range viewing angle
- Excellent brightness
- Vivid color
- Long service life
- Low consumption of energy
- Flexible installation methods

**P7.62 Three - in - one Full Color LED Screen**

▼ Price List

| Pixel Pitch | MOQ | Use Environment | Unit Price |
|----------------|-----------------|-----------------|----------------------------|
| 7.62mm (0.3") | 1m ² | Indoor | ≤ \$1,600 / m ² |

▼ Specifications

| | | | |
|---------------------------------|--|----------------------------------|----------------------------|
| Pixel Pitch | 7.62mm (0.3") | Size of Pixel | 4mm (0.16") (Circle) |
| Size of Block Module | 30.2mm x 30.2mm (1.2" x 1.2") | Pixel of Block Module | 4 x 4 / 8 x 8 |
| Size of Module | 488mm x 244mm (19" x 9.6") | Resolution of Module | 64 x 32 |
| Size of Cabinet | 976mm x 488mm x 120mm (38.4" x 19.2" x 4.7") | Resolution of cabinet | 128 x 64 |
| Area of Cabinet | 0.0572 m ² | Density of Pixel | 17222dots / m ² |
| Pixel Configuration | 1R1PG1B | Best Viewing Distance | 9m - 26m |
| Brightness | > 1200cd / m ² | Maximum Power Consumption | < 700W / m ² |
| Horizontal Viewing Angle | 140° | IP Grade | IP20 |
| Driving Device | Constant current | Driving Method | 1 / 8 / or 1 / 4 scanning |
| Colors | 16777216 | Color Temperature | 6500K |
| Gray Scale | 14 bits | Refresh Frequency | ≥ 180Hz |
| Control Method | Synchronization | Working Temperature | -10°C ~ +45°C |
| Frame Frequency | ≥ 60Hz | MTBF | > 10,000 hours |
| Working Voltage | AC 220V / 110V ± 10% | Life Span | 100,000 hours |

P8 Three-in-one Full Color LED Screen

▼ Price List

| Pixel Pitch | MOQ | Use Environment | Unit Price |
|-------------|-----------------|-----------------|----------------------------|
| 8mm (0.31") | 1m ² | Indoor | ≤ \$1,900 / m ² |



▼ Specifications

| | | | |
|---------------------------------|---|----------------------------------|-------------------------------------|
| Pixel Pitch | 8mm (0.31") | Size of Pixel | 3mm x 4mm (0.12" x 0.16") (Ellipse) |
| Size of Block Module | 32mm x 32mm (1.3" x 1.3") | Pixel of Block Module | 4 x 4 |
| Size of Module | 512mm x 256mm (20" x 20") | Resolution of Module | 64 x 32 |
| Size of Cabinet | 1024mm x 768mm x 120mm (40" x 30" x 4.7") | Resolution of Cabinet | 128 x 64 |
| Area of Cabinet | 0.0944 m ² | Density of Pixel | 15625dots / m ² |
| Pixel Configuration | 1R1PG1B | Best Viewing Distance | 10m - 27m |
| Brightness | > 1800cd / m ² | Maximum Power Consumption | < 600W / m ² |
| Horizontal Viewing Angle | 140° | IP Grade | IP20 |
| Driving Device | Constant current | Driving Method | 1 / 8 / or 1 / 4 scanning |
| Colors | 16777216 | Color Temperature | 6500K |
| Gray Scale | 14 bits | Refresh Frequency | ≥ 180Hz |
| Control Method | Synchronization | Working Temperature | -10°C ~ +45°C |
| Frame Frequency | ≥ 60Hz | MTBF | > 10,000 hours |
| Working Voltage | AC 220V / 110V ± 10% | Life Span | 100,000 hours |

> LED Scrolling Sign

Indoor LED Scrolling Sign

- This Indoor LED scrolling message sign board has everything in the box to start advertising.
- The message board is light weight, easy to move and program, and has various animation and transition effects, with 12 months warranty.
- You can connect the sign to your desktop or a laptop to program the messages, add animation effects and graphics or change the font.
- What's more, you can enjoy our one - stop service by ordering LED signs online from our shop, getting it delivered directly to your doorstep.



▼ Price List

| Model | Color | Pixel | Min Font-height | Max. Qty / Line | Product Size (L x H x T) | Unit Price |
|---------|----------------------|----------|-----------------|-----------------|---|------------|
| F760A | Red / Green / Yellow | 7 x 60 | 2" | 10 | 502mm x 89mm x 40mm (20" x 3.5" x 1.6") | ≤ \$95 |
| F780A | Red / Green / Yellow | 7 x 80 | 2" | 15 | 655mm x 89mm x 40mm (26" x 3.5" x 1.6") | ≤ \$112 |
| F795A | Red / Green / Yellow | 7 x 95 | 2" | 16 | 769mm x 89mm x 40mm (30" x 3.5" x 1.6") | ≤ \$129 |
| F7120A | Red / Green / Yellow | 7 x 120 | 2" | 20 | 958mm x 89mm x 40mm (38" x 3.5" x 1.6") | ≤ \$150 |
| F1664A | Red / Green / Yellow | 16 x 64 | 2" | 10 | 518mm x 142mm x 40mm (20" x 5.6" x 1.6") | ≤ \$127 |
| F1696A | Red / Green / Yellow | 16 x 96 | 2" | 16 | 762mm x 142mm x 40mm (30" x 5.6" x 1.6") | ≤ \$155 |
| F16128A | Red / Green / Yellow | 16 x 128 | 2" | 21 | 1006mm x 142mm x 40mm (40" x 5.6" x 1.6") | ≤ \$169 |
| F16160A | Red / Green / Yellow | 16 x 160 | 2" | 26 | 1250mm x 142mm x 40mm (49" x 5.6" x 1.6") | ≤ \$199 |
| F16192A | Red / Green / Yellow | 16 x 192 | 2" | 32 | 1494mm x 142mm x 40mm (59" x 5.6" x 1.6") | ≤ \$226 |
| F16224A | Red / Green / Yellow | 16 x 224 | 2" | 37 | 1738mm x 142mm x 40mm (68" x 5.6" x 1.6") | ≤ \$269 |
| F16256A | Red / Green / Yellow | 16 x 256 | 2" | 42 | 1982mm x 142mm x 40mm (78" x 5.6" x 1.6") | ≤ \$295 |
| F1664S | Red | 16 x 64 | 2" | 10 | 518mm x 142mm x 40mm (20" x 5.6" x 1.6") | ≤ \$119 |
| F1696S | Red | 16 x 96 | 2" | 16 | 762mm x 142mm x 40mm (30" x 5.6" x 1.6") | ≤ \$142 |
| F16128S | Red | 16 x 128 | 2" | 21 | 1006mm x 142mm x 40mm (40" x 5.6" x 1.6") | ≤ \$148 |
| F16160S | Red | 16 x 160 | 2" | 26 | 1250mm x 142mm x 40mm (49" x 5.6" x 1.6") | ≤ \$181 |
| F16192S | Red | 16 x 192 | 2" | 32 | 1494mm x 142mm x 40mm (59" x 5.6" x 1.6") | ≤ \$203 |
| F16224S | Red | 16 x 224 | 2" | 37 | 1738mm x 142mm x 40mm (68" x 5.6" x 1.6") | ≤ \$236 |
| F16256S | Red | 16 x 256 | 2" | 42 | 1982mm x 142mm x 40mm (78" x 5.6" x 1.6") | ≤ \$265 |
| F2464A | Red / Green / Yellow | 24 x 64 | 2" | 10 | 533mm x 228mm x 70mm (21" x 9" x 2.8") | ≤ \$158 |
| F24128A | Red / Green / Yellow | 24 x 128 | 2" | 21 | 1021mm x 228mm x 70mm (40" x 9" x 2.8") | ≤ \$223 |
| F24160A | Red / Green / Yellow | 24 x 160 | 2" | 26 | 1265mm x 228mm x 70mm (50" x 9" x 2.8") | ≤ \$270 |
| F24192A | Red / Green / Yellow | 24 x 192 | 2" | 32 | 1509mm x 228mm x 70mm (59" x 9" x 2.8") | ≤ \$294 |
| F24224A | Red / Green / Yellow | 24 x 224 | 2" | 37 | 1753mm x 228mm x 70mm (69" x 9" x 2.8") | ≤ \$339 |
| F24256A | Red / Green / Yellow | 24 x 256 | 2" | 42 | 1997mm x 228mm x 70mm (79" x 9" x 2.8") | ≤ \$357 |
| F2464S | Red | 24 x 64 | 2" | 10 | 533mm x 228mm x 70mm (21" x 9" x 2.8") | ≤ \$146 |
| F24128S | Red | 24 x 128 | 2" | 21 | 1021mm x 228mm x 70mm (40" x 9" x 2.8") | ≤ \$199 |
| F24160S | Red | 24 x 160 | 2" | 26 | 1265mm x 228mm x 70mm (50" x 9" x 2.8") | ≤ \$238 |
| F24192S | Red | 24 x 192 | 2" | 32 | 1509mm x 228mm x 70mm (59" x 9" x 2.8") | ≤ \$258 |
| F24224S | Red | 24 x 224 | 2" | 37 | 1753mm x 228mm x 70mm (69" x 9" x 2.8") | ≤ \$295 |
| F24256S | Red | 24 x 256 | 2" | 42 | 1997mm x 228mm x 70mm (79" x 9" x 2.8") | ≤ \$309 |

> LED Scrolling Sign

Indoor LED Scrolling Sign

- This Indoor LED scrolling message sign board has everything in the box to start advertising.
- The message board is light weight, easy to move and program. It has various animation and transition effects, with 12 months warranty.
- You can connect the sign to your desktop or laptop to program the messages, add animation effects and graphics or change the font.
- What's more, you can enjoy our one - stop service by ordering LED signs online from our shop, getting it delivered directly to your doorstep.



▼ Price List

| Model | Color | Pixel | Min Font-height | Max. Qty / Line | Product Size (L x H x T) | Unit Price |
|---------|----------------------|----------|-----------------|-----------------|---|------------|
| F3264A | Red / Green / Yellow | 32 x 64 | 2" | 10 | 533mm x 289mm x 70mm (21" x 11" x 2.8") | ≤ \$179 |
| F32128A | Red / Green / Yellow | 32 x 128 | 2" | 21 | 1021mm x 289mm x 70mm (40" x 11" x 2.8") | ≤ \$260 |
| F32160A | Red / Green / Yellow | 32 x 160 | 2" | 26 | 1265mm x 289mm x 70mm (50" x 11" x 2.8") | ≤ \$321 |
| F32192A | Red / Green / Yellow | 32 x 192 | 2" | 32 | 1509mm x 289mm x 70mm (59" x 11" x 2.8") | ≤ \$347 |
| F32224A | Red / Green / Yellow | 32 x 224 | 2" | 37 | 1753mm x 289mm x 70mm (69" x 11" x 2.8") | ≤ \$403 |
| F32256A | Red / Green / Yellow | 32 x 256 | 2" | 42 | 1997mm x 289mm x 70mm (79" x 11" x 2.8") | ≤ \$428 |
| F3264S | Red | 32 x 64 | 2" | 10 | 558mm x 314mm x 90mm (22" x 12" x 3.5") | ≤ \$162 |
| F32128S | Red | 32 x 128 | 2" | 21 | 1045mm x 314mm x 90mm (41" x 12" x 3.5") | ≤ \$220 |
| F32160S | Red | 32 x 240 | 2" | 26 | 1290mm x 314mm x 90mm (51" x 12" x 3.5") | ≤ \$279 |
| F32192S | Red | 32 x 192 | 2" | 32 | 1533mm x 314mm x 90mm (60" x 12" x 3.5") | ≤ \$296 |
| F32224S | Red | 32 x 224 | 2" | 37 | 1777mm x 314mm x 90mm (70" x 12" x 3.5") | ≤ \$343 |
| F32256S | Red | 32 x 256 | 2" | 42 | 2021mm x 314mm x 90mm (80" x 12" x 3.5") | ≤ \$360 |
| D1680A | Red / Green / Yellow | 16 x 80 | 1.5" | 13 | 410mm x 120mm x 34mm (16" x 4.7" x 1.3") | ≤ \$107 |
| D1696A | Red / Green / Yellow | 16 x 96 | 1.5" | 16 | 486mm x 120mm x 34mm (19" x 4.7" x 1.3") | ≤ \$131 |
| D16128A | Red / Green / Yellow | 16 x 128 | 1.5" | 21 | 638mm x 120mm x 34mm (25" x 4.7" x 1.3") | ≤ \$148 |
| D16160A | Red / Green / Yellow | 16 x 160 | 1.5" | 26 | 700mm x 120mm x 34mm (28" x 4.7" x 1.3") | ≤ \$159 |
| D16240A | Red / Green / Yellow | 16 x 240 | 1.5" | 40 | 1170mm x 120mm x 34mm (46" x 4.7" x 1.3") | ≤ \$210 |
| D1680S | Red | 16 x 80 | 1.5" | 13 | 410mm x 120mm x 34mm (16" x 4.7" x 1.3") | ≤ \$102 |
| D1696S | Red | 16 x 96 | 1.5" | 16 | 486mm x 120mm x 34mm (19" x 4.7" x 1.3") | ≤ \$125 |
| D16128S | Red | 16 x 128 | 1.5" | 21 | 638mm x 120mm x 34mm (25" x 4.7" x 1.3") | ≤ \$139 |
| D16160S | Red | 16 x 160 | 1.5" | 26 | 700mm x 120mm x 34mm (28" x 4.7" x 1.3") | ≤ \$151 |
| D16240S | Red | 16 x 240 | 1.5" | 40 | 1170mm x 120mm x 34mm (46" x 4.7" x 1.3") | ≤ \$194 |
| D3264A | Red / Green / Yellow | 32 x 64 | 1.5" | 10 | 349mm x 197mm x 70mm (14" x 8" x 2.8") | ≤ \$145 |
| D32128A | Red / Green / Yellow | 32 x 128 | 1.5" | 21 | 653mm x 197mm x 70mm (26" x 8" x 2.8") | ≤ \$203 |
| D32192A | Red / Green / Yellow | 32 x 192 | 1.5" | 32 | 912mm x 197mm x 70mm (36" x 8" x 2.8") | ≤ \$266 |
| D32256A | Red / Green / Yellow | 32 x 256 | 1.5" | 42 | 1261mm x 197mm x 70mm (50" x 8" x 2.8") | ≤ \$316 |
| D3264S | Red | 32 x 64 | 1.5" | 10 | 349mm x 197mm x 70mm (14" x 8" x 2.8") | ≤ \$136 |
| D32128S | Red | 32 x 128 | 1.5" | 21 | 653mm x 197mm x 70mm (26" x 8" x 2.8") | ≤ \$186 |
| D32192S | Red | 32 x 192 | 1.5" | 32 | 912mm x 197mm x 70mm (36" x 8" x 2.8") | ≤ \$240 |
| D32256S | Red | 32 x 256 | 1.5" | 42 | 1261mm x 197mm x 70mm (50" x 8" x 2.8") | ≤ \$280 |

> LED Scrolling Sign



Semi Outdoor LED Scrolling Sign

- This Semi Outdoor LED scrolling sign are ideal for advertising your shop weekly specials, lunch time deals and other promotions in your store.
- There are two options to program the Semi Outdoor Scrolling Message Sign. You can use the fully programmable remote control to store and update messages or connect the LED sign to your desktop or laptop and transmit the messages.
- It comes with more than 20 transition effects and can be programmed to display messages using big fonts in one line or small fonts in two lines.
- Within 12 months warranty and maintenance free, you can buy this LED signs with confidence.



▼ Price List

| Model | Color | Pixel | Min Font-height | Max. Qty / Line | Product Size (L x H x T) | Unit Price |
|--------------|----------------------|----------|-----------------|-----------------|---|------------|
| F760R | Red | 7 x 60 | 2" | 10 | 502mm x 89mm x 40mm (20" x 3.5" x 1.6") | ≤ \$95 |
| F780R | Red | 7 x 80 | 2" | 15 | 655mm x 89mm x 40mm (26" x 3.5" x 1.6") | ≤ \$112 |
| F795R | Red | 7 x 95 | 2" | 16 | 769mm x 89mm x 40mm (30" x 3.5" x 1.6") | ≤ \$129 |
| F7120R | Red | 7 x 120 | 2" | 20 | 958mm x 89mm x 40mm (38" x 3.5" x 1.6") | ≤ \$150 |
| F760B | Blue | 7 x 60 | 2" | 10 | 502mm x 89mm x 40mm (20" x 3.5" x 1.6") | ≤ \$106 |
| F780B | Blue | 7 x 80 | 2" | 15 | 655mm x 89mm x 40mm (26" x 3.5" x 1.6") | ≤ \$121 |
| F795B | Blue | 7 x 95 | 2" | 16 | 769mm x 89mm x 40mm (30" x 3.5" x 1.6") | ≤ \$140 |
| F7120B | Blue | 7 x 120 | 2" | 20 | 958mm x 89v x 40mm (38" x 3.5" x 1.6") | ≤ \$159 |
| F1664R | Red | 16 x 64 | 2" | 10 | 518mm x 142mm x 40mm (20" x 5.6" x 1.6") | ≤ \$132 |
| F1696R | Red | 16 x 96 | 2" | 16 | 762mm x 142mm x 40mm (30" x 5.6" x 1.6") | ≤ \$161 |
| F16128R | Red | 16 x 128 | 2" | 21 | 1006mm x 142mm x 40mm (40" x 5.6" x 1.6") | ≤ \$182 |
| F16160R | Red | 16 x 160 | 2" | 26 | 1250mm x 142mm x 40mm (49" x 5.6" x 1.6") | ≤ \$208 |
| F16192R | Red | 16 x 192 | 2" | 32 | 1494mm x 142mm x 40mm (59" x 5.6" x 1.6") | ≤ \$256 |
| F16224R | Red | 16 x 224 | 2" | 37 | 1738mm x 142mm x 40mm (68" x 5.6" x 1.6") | ≤ \$292 |
| F16256R | Red | 16 x 256 | 2" | 42 | 1982mm x 142mm x 40mm (78" x 5.6" x 1.6") | ≤ \$329 |
| F1664RG | Red / Green / Yellow | 16 x 64 | 2" | 10 | 518mm x 142mm x 40mm (20" x 5.6" x 1.6") | ≤ \$154 |
| F1696RG | Red / Green / Yellow | 16 x 96 | 2" | 16 | 762mm x 142mm x 40mm (30" x 5.6" x 1.6") | ≤ \$191 |
| F16128RG | Red / Green / Yellow | 16 x 128 | 2" | 21 | 1006mm x 142mm x 40mm (40" x 5.6" x 1.6") | ≤ \$225 |
| F16160RG | Red / Green / Yellow | 16 x 160 | 2" | 26 | 1250mm x 142mm x 40mm (49" x 5.6" x 1.6") | ≤ \$270 |
| F16192RG | Red / Green / Yellow | 16 x 192 | 2" | 32 | 1494mm x 142mm x 40mm (59" x 5.6" x 1.6") | ≤ \$316 |
| F16224RG | Red / Green / Yellow | 16 x 224 | 2" | 37 | 1738mm x 142mm x 40mm (68" x 5.6" x 1.6") | ≤ \$363 |
| F16256RG | Red / Green / Yellow | 16 x 256 | 2" | 42 | 1982mm x 142mm x 40mm (78" x 5.6" x 1.6") | ≤ \$410 |
| F2464R | Red | 24 x 64 | 2" | 10 | 533mm x 228mm x 70mm (21" x 9" x 2.8") | ≤ \$166 |
| F24128R | Red | 24 x 128 | 2" | 21 | 1021mm x 228mm x 70mm (40" x 9" x 2.8") | ≤ \$245 |
| F24160R | Red | 24 x 160 | 2" | 26 | 1265mm x 228mm x 70mm (50" x 9" x 2.8") | ≤ \$288 |
| F24192R | Red | 24 x 192 | 2" | 32 | 1509mm x 228mm x 70mm (59" x 9" x 2.8") | ≤ \$316 |
| F24224R | Red | 24 x 224 | 2" | 37 | 1753mm x 228mm x 70mm (69" x 9" x 2.8") | ≤ \$365 |
| F24256R | Red | 24 x 256 | 2" | 42 | 1997mm x 228mm x 70mm (79" x 9" x 2.8") | ≤ \$387 |
| F2464RG / B | R / G / Y or Blue | 24 x 64 | 2" | 10 | 533mm x 228mm x 70mm (21" x 9" x 2.8") | ≤ \$198 |
| F24128RG / B | R / G / Y or Blue | 24 x 128 | 2" | 21 | 1021mm x 228mm x 70mm (40" x 9" x 2.8") | ≤ \$308 |
| F24160RG / B | R / G / Y or Blue | 24 x 160 | 2" | 26 | 1265mm x 228mm x 70mm (50" x 9" x 2.8") | ≤ \$368 |
| F24192RG / B | R / G / Y or Blue | 24 x 192 | 2" | 32 | 1509mm x 228mm x 70mm (59" x 9" x 2.8") | ≤ \$411 |
| F24224RG / B | R / G / Y or Blue | 24 x 224 | 2" | 37 | 1753mm x 228mm x 70mm (69" x 9" x 2.8") | ≤ \$476 |
| F24256RG / B | R / G / Y or Blue | 24 x 256 | 2" | 42 | 1997mm x 228mm x 70mm (79" x 9" x 2.8") | ≤ \$514 |
| F3264R | Red | 32 x 64 | 2" | 10 | 558mm x 314mm x 90mm (22" x 12" x 3.5") | ≤ \$187 |
| F32128R | Red | 32 x 128 | 2" | 21 | 1045mm x 314mm x 90mm (41" x 12" x 3.5") | ≤ \$278 |
| F32160R | Red | 32 x 160 | 2" | 26 | 1290mm x 314mm x 90mm (51" x 12" x 3.5") | ≤ \$343 |
| F32192R | Red | 32 x 192 | 2" | 32 | 1533mm x 314mm x 90mm (60" x 12" x 3.5") | ≤ \$372 |
| F32224R | Red | 32 x 224 | 2" | 37 | 1777mm x 314mm x 90mm (70" x 12" x 3.5") | ≤ \$433 |
| F32256R | Red | 32 x 256 | 2" | 42 | 2021mm x 314mm x 90mm (80" x 12" x 3.5") | ≤ \$462 |
| F3264RG / B | R / G / Y or Blue | 32 x 64 | 2" | 10 | 558mm x 314mm x 90mm (22" x 12" x 3.5") | ≤ \$236 |
| F32128RG / B | R / G / Y or Blue | 32 x 128 | 2" | 21 | 1045mm x 314mm x 90mm (41" x 12" x 3.5") | ≤ \$363 |
| F32160RG / B | R / G / Y or Blue | 32 x 160 | 2" | 26 | 1290mm x 314mm x 90mm (51" x 12" x 3.5") | ≤ \$449 |
| F32192RG / B | R / G / Y or Blue | 32 x 192 | 2" | 32 | 1533mm x 314mm x 90mm (60" x 12" x 3.5") | ≤ \$500 |
| F32224RG / B | R / G / Y or Blue | 32 x 224 | 2" | 37 | 1777mm x 314mm x 90mm (70" x 12" x 3.5") | ≤ \$583 |
| F32256RG / B | R / G / Y or Blue | 32 x 256 | 2" | 42 | 2021mm x 314mm x 90mm (80" x 12" x 3.5") | ≤ \$632 |

> LED Modules

This LED SMD module is widely used for solid lighting character, LED signs, LED lighting box, scenery designs and decor, etc.

- Using high brightness LED SMD as the lamp - house, having wide viewing angle and petty aperture.
- Controlled by the chips with constant current, having constant working current and indiscriminate between the cathode and anode.
- With a settled orifice and 3M gummed paper, very convenient to install.
- Long life time: Above 80000hrs.
- Low power consumption, energy conservation and saving electricity.



Waterproof LED Module, SMD 5050, 3LEDs, White light, 74mm x 12mm (2.9" x 0.47")



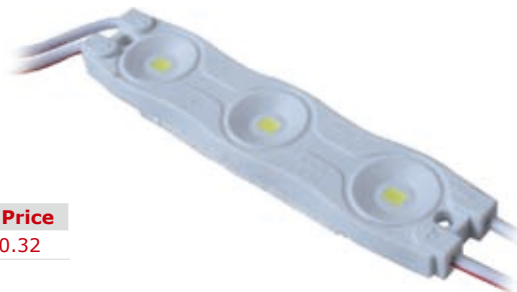
▼ Price List

| Model | MOQ | Color | Unit Price |
|----------------------|--------|--------------------------------------|------------|
| LEDM-LBY-507412-3CWF | 100pcs | Warm White / Pure White / Cool White | ≤ \$0.61 |

▼ Specifications

| | | | |
|---------------------------------|--|-----------------------------|--|
| Color | Red, Yellow, Blue, Green, White | LED type | 5050 SMD |
| LED Qty | 3pcs | Dimension | 74mm x 12mm x 6mm (2.9" x 0.47" x 0.24") |
| Module Interface | 2 x 0.5 sq. mm x 75mm (2.9") RV leads | Interface Definition | Gray anode, white cathode |
| Cluster Qty | 20pcs | Module Space Between | 75mm (2.9") |
| Weight | 10g ± 5% | Life Span | MTBF > 50000hours |
| Environment Parameter | | | |
| Working Temperature | -40°C ~ 60°C | | |
| Defend Grade | IP65 completely satisfied the outdoor lighting standard | | |
| Electronic Specification | | | |
| Working Input Voltage | D12V ± 5% | Max. Power | 0.63W |
| Driving Mode | Invariableness Voltage (Insure every LED working under the invariableness voltage) | | |
| Lighting Capability | | | |
| Luminous Flux | 54lm | | |
| Beam Angle | 120° | | |

SMD 2835 LED Module Waterproof, 3 LEDs, White light, L70mm x W16mm x H5mm (2.8" x 0.63" x 0.24")



▼ Price List

| Model | MOQ | Color | Unit Price |
|------------------|--------|--------------------------------------|------------|
| LEDM-GKL-MFX146A | 100pcs | Warm White / Pure White / Cool White | ≤ \$0.32 |

▼ Specifications

| | | | |
|---------------------------------|---|-----------------------------|--|
| Color | Red ,White | LED Type | 2835SMD |
| LED Qty | 3pcs | Dimension | 70mm x 16mm x 6mm (2.8" x 0.63" x 0.24") |
| Module Interface | 2 x 0.5 sq. mm x 80mm (3.15") RV leads | Interface Definition | Gray anode, white cathode |
| Cluster Qty | 20pcs | Module Space Between | 80mm (3.15") |
| Weight | 10g ± 5% | Life Span | MTBF> 50000hours |
| Environment Parameter | | | |
| Working Temperature | -40°C ~ 60°C | | |
| Defend Grade | IP65 completely satisfied the outdoor lighting standard | | |
| Electronic Specification | | | |
| Working Input Voltage | D12V ± 5% | Max. Power | 0.72W |
| Driving Mode | Invariableness Voltage! (Insure every LED working under the invariableness voltage) | | |
| Lighting Capability | | | |
| Luminous Flux | 66lm | | |
| Beam Angle | 140° | | |

> LED Modules

This LED SMD module is widely used for solid lighting character, LED signs, LED lighting box, scenery designs and decor, etc.

- Using high brightness LED SMD as the lamp - house, having wide viewing angle and petty aperture.
- Controlled by the chips with constant current, having constant working current and indiscriminate between the cathode and anode.
- With a settled orifice and 3M gummed paper, very convenient to install.
- Long life time: Above 80000hrs.
- Low power consumption, energy conservation and saving electricity.

High Power 3 SMD Waterproof LED Module, White LED, 1.44W, 44mm x 43mm (1.7" x 1.7")

▼ Price List

| Model | MOQ | Color | Unit Price |
|----------------------|-------|-------------------------|------------|
| LEDMODULE-CM-IEW340B | 60pcs | Pure White / Cool White | ≤ \$1.39 |

▼ Specifications

| | | | | |
|---------------------------------|--|-------------------|-----------------------------|---------------------------|
| Color | Pure White / Cool White | | LED Type | 5730 SMD |
| LED Qty | 3pcs | | Dimension | 44mm x 43mm (1.7" x 1.7") |
| Module Interface | 26# line red & white wires, negative wires length: 260mm, red +, white - | | Interface Definition | Red anode, white cathode |
| Cluster Qty | 30pcs | | Module Space Between | 260mm(10") |
| Weight | 20g ± 5% | | Life Span | MTBF> 50000hours |
| Environment Parameter | | | | |
| Working Temperature | -40°C ~ 50°C | | | |
| Defend Grade | IP67 completely satisfied the outdoor lighting standard | | | |
| Electronic Specification | | | | |
| Working Input Voltage | D12V ± 5% | Max. Power | 1.44W | |
| Driving Mode | Constant current driving | | | |
| Lighting Capability | | | | |
| Luminous Flux | 120lm | | | |
| Beam Angle | 120° | | | |



3 SMD Waterproof LED Module, 0.3W, White LED, 74x12.4mm (3" x 0.49")

▼ Price List

| Model | MOQ | Color | Unit Price |
|-------------------|--------|--------------------------------------|------------|
| LEDM-RS-M613B-3WF | 100pcs | Warm White / Pure White / Cool White | ≤ \$0.43 |

▼ Specifications

| | | | | |
|---------------------------------|---|-------------------|-----------------------------|--|
| Color | Warm White / Pure White / Cool White | | LED Type | 3528 SMD |
| LED Qty | 3pcs | | Dimension | 74mm x 12mm x 6mm (3" x 0.49" x 0.24") |
| Module Interface | 2 x 75mm (3") RV leads | | Interface Definition | Red+, White- |
| Cluster Qty | 100pcs | | Module Space Between | 60mm (2.4") ± 5% |
| Weight | 10g ± 5% | | Life Span | MTBF> 50000hours |
| Environment Parameter | | | | |
| Working Temperature | -40°C ~ 60°C | | | |
| Defend Grade | IP65 completely satisfied the outdoor lighting standard | | | |
| Electronic Specification | | | | |
| Working Input Voltage | D12V ± 5% | Max. Power | 0.3W | |
| Driving Mode | Invariableness Voltage! (Insure every LED working under the invariableness voltage) | | | |
| Lighting Capability | | | | |
| Luminous Flux | 21lm | | | |
| Beam Angle | 118° | | | |



> LED Modules

This LED SMD module is widely used for solid lighting character, LED signs, LED lighting box, scenery designs and décor, etc.

- Using high brightness LED SMD as the lamp - house, having wide viewing angle and petty aperture.
- Controlled by the chips with constant current, having constant working current and indiscriminate between the cathode and anode.
- With a settled orifice and 3M gummed paper, very convenient to install.
- Long life time: Above 80000hrs.
- Low power consumption, energy conservation and saving electricity.

Waterproof LED Module, SMD 3528, 2LEDs, White light, 26mm x 7mm (1" x 0.2")

▼ Price List

| Model | MOQ | Color | Unit Price |
|----------------------|--------|--------------------------------------|------------|
| LEDM-LBY-352607-2CWF | 100pcs | Worm White / Pure White / Cool White | ≤ \$0.26 |



▼ Specifications

| | | | |
|---------------------------------|---|-----------------------------|-------------------------------------|
| Color | Worm White / Pure White / Cool White | LED Type | 3528 SMD |
| LED Qty | 2pcs | Dimension | 26mm x 7mm x 5mm (1" x 0.2" x 0.2") |
| Module Interface | 2 x 0.5 sq. mm x 75mm (2.9") RV leads | Interface Definition | Gray anode, white cathode |
| Cluster Qty | 20pcs | Module Space Between | 75mm (3") |
| Weight | 10g ± 5% | Life Span | MTBF> 50000hours |
| Environment Parameter | | | |
| Working Temperature | -40°C ~ 60°C | | |
| Defend Grade | IP65 completely satisfied the outdoor lighting standard | | |
| Electronic Specification | | | |
| Working Input Voltage | D12V ± 5% | Max. Power | 0.14W |
| Driving Mode | Invariableness Voltage! (Insure every LED working under the invariableness voltage) | | |
| Lighting Capability | | | |
| Luminous Flux | 12lm | | |
| Beam Angle | 120° | | |

Waterproof LED Module, SMD 5050, 4LEDs, Metal shell, White Light, 35mm x 35mm (1.4" x 1.4")

▼ Price List

| Model | MOQ | Color | Unit Price |
|----------------------|--------|--------------------------------------|------------|
| LEDM-LBY-503535-4CWF | 100pcs | Worm White / Pure White / Cool White | ≤ \$0.6 |

▼ Specifications

| | | | |
|---------------------------------|---|-----------------------------|---------------------------|
| Color | Worm White / Pure White / Cool White | LED Type | 5050 SMD |
| LED Qty | 4pcs | Demension | 35mm x 35mm (1.4" x 1.4") |
| Module Interface | 2 x 0.5 sq. mm x 75mm (2.9") RV leads | Interface Definition | Gray anode, white cathode |
| Cluster Qty | 20pcs | Module Space Between | 75mm (3") |
| Weight | 10g ± 5% | Life Span | MTBF> 50000hours |
| Environment Parameter | | | |
| Working Temperature | -40°C ~ 60°C | | |
| Defend Grade | IP65 completely satisfied the outdoor lighting standard | | |
| Electronic Specification | | | |
| Working Input Voltage | D12V ± 5% | Max. Power | 0.84W |
| Driving Mode | Invariableness Voltage (Insure every LED working under the invariablevoltage) | | |
| lighting capability | | | |
| Luminous Flux | 72lm | | |
| Beam Angle | 120° | | |



DS-LEDCPLR-6M-144: LED Clawed Light String



6M length, 144LEDs

1.5M 2 x 0.75sqm lead cable with DN005 outdoor plug, 3A AC / DC, connectable 230V, 9.2W

▼ Specifications

| Model | Inner Box | PCS / CTN | Export CTN | N.W. | G.W. | Unit Price |
|----------------|----------------|-----------|------------------|--------|--------|------------|
| LEDCPLR-6M-144 | 28 x 20 x 18cm | 10 | 42.5 x 42 x 30cm | 12.5kg | 13.5kg | ≤ \$23.15 |

This quotation is average price of different colors, and there are differences among the prices. Please visit our website www.Sign-in-China.com to get details for reference.

DS-LEDPLR Series LED Curtain Light

Outdoor and indoor use. Packed by colorful carton.

This curtain light can be used in the building wall, window and other similar places for decoration.

▼ Product Highlights

- Multi - Fix compatible
- Brilliant shine LED light
- Low heat emission
- Low power consumption
- Super long life - span
- **Protection Class:** IP44
- **Eight colors are available:** Red, Yellow, Amber, Blue, Green, White, Warm white, Pink.

▼ Models

DS-LEDPLR-3813-456

20 strings, 1.5M / string, 2M main cable, 19 LEDs / string, totaled 456LEDs, with sealed cap.
1.5M lead cable with DN005 outdoor plug, 3A AC / DC, connectable. 230V, 27.6W.

DS-LEDPLR-3825-912

24 strings, 3M / string, 2M main cable, 38 LEDs / string, totaled 912LEDs, with sealed cap.
1.5M lead cable with DN005 outdoor plug, 3A AC / DC, connectable. 230V, 55.2W.

DS-LEDPLR-5325-1272

24 strings, 5M / string, 2M main cable, 38 LEDs / string, totaled 1272LEDs, with sealed cap.
1.5M lead cable with DN005 outdoor plug, 3A AC / DC, connectable. 230V, 110.4W.



DS-LEDPLR-2015-300

20 strings, 1.5M / string, 2M main cable, 15 LEDs / string, totaled 300 LEDs, with sealed cap.
1.5M lead cable with DN005 outdoor plug, 3A AC / DC, connectable. 230V, 46W.

DS-LEDPLR-2030-600

20 strings, 3M / string, 2M main cable, 30 LEDs / string, totaled 600LEDs, with sealed cap.
1.5M lead cable with DN005 outdoor plug, 3A AC / DC, connectable. 230V, 92W.

DS-LEDPLR-7620-1520

20 strings, 7M / string, 2M main cable, 76 LEDs / string, totaled 1520 LEDs, with sealed cap.
1.5M lead cable with DN005 outdoor plug, 3A AC / DC, connectable. 230V, 92W.

▼ Specifications

| Model | Inner Box | PCS / CTN | Export CTN | N.W. | G.W. | Unit Price |
|---------------------|----------------|-----------|------------------|--------|--------|------------|
| DS-LEDPLR-3813-456 | 38 x 28 x 12cm | 6 | 58.5 x 40 x 30cm | 23.7kg | 24.9kg | ≤ \$71.55 |
| DS-LEDPLR-3825-912 | 38 x 28 x 17cm | 3 | 53.5 x 40 x 30cm | 16.2kg | 17.4kg | ≤ \$129.45 |
| DS-LEDPLR-5325-1272 | 38 x 28 x 26cm | 2 | 54.5 x 40 x 30cm | 16.6kg | 17.8kg | ≤ \$178.50 |
| DS-LEDPLR-1520-300 | 38 x 28 x 12cm | 6 | 58.5 x 40 x 30cm | 22.7kg | 23.9kg | ≤ \$204.92 |
| DS-LEDPLR-3020-600 | 38 x 28 x 17cm | 3 | 53.5 x 40 x 30cm | 15.2kg | 16.4kg | ≤ \$55.16 |
| DS-LEDPLR-7620-1520 | 38 x 28 x 26cm | 2 | 54.5 x 40 x 30cm | 18.3kg | 19.5kg | ≤ \$98.10 |

This quotation is average price of different colors, and there are differences among the prices. Please visit our website www.Sign-in-China.com to get details for reference.

> Decorative Light > Decorative light

DS-LEDCPLR Series LED Clawed Curtain Light

Outdoor and indoor use. Packaged in colorful carton.

This curtain light may be used in the building wall, window, stage and other similar places' decoration.

**▼ Specifications**

| Model | Inner Box | PCS / CTN | Export CTN | N.W. | G.W. | Unit Price |
|---------------------|----------------|-----------|------------------|--------|--------|------------|
| DS-LEDCPLR-2x2M-480 | 38 x 28 x 17cm | 3 | 53.5 x 40 x 30cm | 14.8kg | 16kg | ≤ \$69.47 |
| DS-LEDCPLR-2x4M-864 | 38 x 28 x 26cm | 2 | 54.5 x 40 x 30cm | 16.7kg | 17.9kg | ≤ \$120.00 |

This quotation is average price of different colors, and there are differences among the prices.

Please visit our website www.Sign-in-China.com to get details for reference.

▼ Product Highlights

- Special clawed design
- Multi - Fix compatible
- Brilliant shine LED light
- Low heat emission
- Low power consumption
- Super long life - span
- **Protection Class:** IP44
- There are eight colors (Red, Yellow, Amber, Blue, Green, White, Warm white, Pink).

▼ Models**DS-LEDCPLR-2M-480**

2 x 2M, 12 strings, 2M / string, 40 LEDs / string, totaled 480 LEDs, with sealed cap. 1.5M 2 x 0.75sqm lead cable with DN005 outdoor plug, 3A AC / DC, connectable. 230V, 27.6W.

DS-LEDCPLR-2M-864

2 x 4M, 12 strings, 4M / string, 72 LEDs / string, totaled 864 LEDs, with sealed cap. 1.5M 2 x 0.75sqm lead cable with DN005 outdoor plug, 3A AC / DC, connectable. 230V, 55.2W.

DS-LEDIPLR Series LED Icicle Light

Outdoor and indoor use. Packaged in colorful carton.

This icicle light may be used in the building wall, roof, window and other similar places' decoration.

▼ Product Highlights

- Multi - Fix compatible
- Brilliant shine LED light
- Replaceable segment
- Low heat emission
- Low power consumption
- Super long life - span
- **Protection Class:** IP44
- There are eight colors (Red, Yellow, Amber, Blue, Green, White, Warm white, Pink).

▼ Models**DS-LEDIPLR-5730-114**

3 x 0.5M, totaled 114 LEDs, with sealed cap, 3 / 4 / 5 / 4 structure.

1.5M 2 x 0.75sqm lead cable with DN005 outdoor plug, 3A AC / DC, connectable. 230V, 9.2W.

DS-LEDIPLR-3830-228

3 x 1M, totaled 228 LEDs, with sealed cap, 6 / 8 / 10 / 8 structure.

1.5M 2 x 0.75sqm lead cable with DN005 outdoor plug, 3A AC / DC, connectable. 230V.

DS-LEDIPLR-3840-304

4 x 1M, totaled 304 LEDs, with sealed cap, 6 / 8 / 10 / 6 structure.

1.5M 2 x 0.75sqm lead cable with DN005 outdoor plug, 3A AC / DC, connectable. 230V.

DS-LEDIPLR-38-150-304

4 x 1.5M, totaled 304 LEDs, with sealed cap, 3 / 8 / 15 / 8 / 4 structure.

1.5M 2 x 0.75sqm lead cable with DN005 outdoor plug, 3A AC / DC, connectable. 230V.

▼ Specifications

| Model | Inner Box | PCS / CTN | Export CTN | N.W. | G.W. | Unit Price |
|-----------------------|----------------|-----------|------------------|--------|--------|------------|
| DS-LEDIPLR-5730-114 | 25 x 19 x 11cm | 8 | 46 x 40 x 27cm | 10.5kg | 11.5kg | ≤ \$20.50 |
| DS-LEDIPLR-3830-228 | 34 x 20 x 10cm | 10 | 52.5 x 42 x 36cm | 15.2kg | 16.4kg | ≤ \$35.90 |
| DS-LEDIPLR-3840-304 | 34 x 34 x 9cm | 5 | 47.5 x 36 x 36cm | 13.5kg | 14.5kg | ≤ \$46.92 |
| DS-LEDIPLR-38-150-304 | 34 x 34 x 9cm | 5 | 47.5 x 36 x 36cm | 15.8kg | 16.8kg | ≤ \$46.92 |

This quotation is average price of different colors, and there are differences among the prices.

Please visit our website www.Sign-in-China.com to get details for reference.



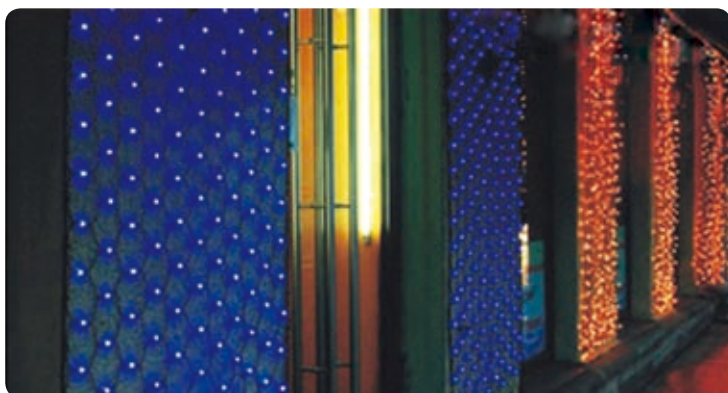
DS-LEDNLR Series LED Single Bulb Net Light and LED Twin Bulb Net Light

Outdoor and indoor use. Packed in colorful carton.

This light can be used in the building wall, trees, garden and other similar places' decoration.

▼ Product Highlights

- Multi - Fix compatible
- Brilliant shine LED light
- Low heat emission
- Low power consumption
- Super long life - span
- **Protection Class: IP44**
- There are eight colors (Red, Yellow, Amber, Blue, Green, White, Warm white, Pink).



▼ Models

DS-LEDNLR-176: LED Single Bulb Net Light

2 x 0.8M, 176 LEDs, with sealed cap.

1.5M 2 x 0.75sqm lead cable with DN005 outdoor plug, connectable. 230V.

DS-LEDNLR-288: LED Single Bulb Net Light

2 x 1.2M, 288 LEDs, with sealed cap.

1.5M 2 x 0.75sqm lead cable with DN005 outdoor plug, connectable. 230V.

DS-LEDNLR-320: LED Single Bulb Net Light

1.2 x 2.2M, 320 LEDs, with sealed cap.

1.5M 2 x 0.75sqm lead cable with DN005 outdoor plug, connectable. 230V.

DS-LEDNLR-432: LED Single Bulb Net Light

3 x 1.5M, 432 LEDs, with sealed cap.

1.5M 2 x 0.75sqm lead cable with DN005 outdoor plug, connectable. 230V.

DS-LEDNLR-406: LED Twin Bulb Net Light

2.5 x 1.2M, 406 LEDs, with sealed cap.

1.5M 2 x 0.75sqm lead cable with DN005 outdoor plug, connectable. 230V.

DS-LEDNLR-648: LED Twin Bulb Net Light

4 x 2M, 648 LEDs, with sealed cap.

1.5M 2 x 0.75sqm lead cable with DN005 outdoor plug, connectable. 230V.



▼ Specifications

| Model | Inner Box | PCS / CTN | Export CTN | N.W. | G.W. | Unit Price |
|---------------|----------------|-----------|------------------|--------|--------|------------|
| DS-LEDNLR-176 | 30 x 20 x 10cm | 6 | 42 x 32 x 32cm | 11.5kg | 12.5kg | ≤ \$32.88 |
| DS-LEDNLR-288 | 34 x 20 x 10cm | 6 | 42 x 36 x 32cm | 13kg | 14kg | ≤ \$52.10 |
| DS-LEDNLR-320 | 34 x 20 x 10cm | 10 | 52.5 x 42 x 36cm | 22kg | 23.2kg | ≤ \$57.66 |
| DS-LEDNLR-432 | 38 x 34 x 8cm | 5 | 42.5 x 40 x 36cm | 16.6kg | 17.6kg | ≤ \$76.46 |
| DS-LEDNLR-406 | 34 x 26 x 10cm | 8 | 54.5 x 42 x 36cm | 23.8kg | 25.1kg | ≤ \$65.22 |
| DS-LEDNLR-648 | 38 x 34 x 8cm | 5 | 42.5 x 42 x 36cm | 23kg | 24kg | ≤ \$113.42 |

This quotation is average price of different colors, and there are differences among the prices. Please visit our website www.Sign-in-China.com to get details for reference.

DS-LEDMGLR Series LED Garland Light



Outdoor and indoor use. Packaged in colorful carton.

This light may be used in the building hall roof, street, garden and other similar places' decoration.

▼ Models

DS-LEDMGLR-1.4M-144

1.4M length, 144 LEDs, with sealed cap

1.5M 2 x 0.75sqm lead cable with DN005 outdoor plug, connectable. 230V, 11W

DS-LEDMGLR-2.7M-180

2.7M length, 180 LEDs, with sealed cap

1.5M 2 x 0.75sqm lead cable with DN005 outdoor plug, 3A AC / DC transfer, connectable. 230V

▼ Product Highlights

- Multi - Fix compatible
- Brilliant shine LED light
- Low heat emission
- Super long life time
- **Protection Class:** IP44
- There are eight colors (Red, Yellow, Amber, Blue, Green, White, Warm white, Pink).

▼ Specifications

| Model | Inner Box | PCS / CTN | Export CTN | N.W. | G.W. | Unit Price |
|---------------------|----------------|-----------|------------------|------|--------|------------|
| DS-LEDMGLR-1.4M-144 | 34 x 20 x 10cm | 10 | 52.5 x 42 x 36cm | 15kg | 16.2kg | ≤ \$24.85 |
| DS-LEDMGLR-2.7M-180 | 30 x 28 x 12cm | 6 | 58.5 x 38 x 32cm | 12kg | 13.2kg | ≤ \$33.57 |

This quotation is average price of different colors, and there are differences among the prices. Please visit our website www.Sign-in-China.com to get details for reference.

DS-LEDTWR Series LED Twinkle Light

Outdoor and indoor use. Packaged in colorful carton.

This light may be used in the building hall, garden, stage and other similar places' decoration.

▼ Product Highlights

- Brilliant shine LED light
- 8 Function Controllers
- Low heat emission
- Low power consumption
- Super long life - span
- Protection Class: IP44
- There are eight colors (Red, Yellow, Amber, Blue, Green, White, Warm white, Pink) and one kind of multi - color (R / Y / B / G).

▼ Models

DS-LEDTWR-6M-144

6M length, 144 LEDs, with sealed cap

1.5M 2 x 0.75sqm lead cable with DN005 outdoor plug, 5 wire uncontestable, 8 function IP44 controller. 230V, 12W

DS-LEDTWR-6M-144C

6M length, 144 LEDs, with sealed cap

1.5M 2 x 0.75sqm lead cable with DN005 outdoor plug, 3 wire connectable, 8 function IP44 controller. 230V, 12W

DS-LEDTWR-10M-180

10M length, 180 LEDs, with sealed cap

1.5M 2 x 0.75sqm lead cable with DN005 outdoor plug, 5 wire unconnectable, 8 function IP44 controller. 230V, 15W

DS-LEDTWR-10M-180C

10M length, 180 LEDs, with sealed cap

1.5M 2 x 0.75sqm lead cable with DN005 outdoor plug, 3 wire connectable, 8 function IP44 controller. 230V, 15W

▼ Specifications

| Model | Inner Box | PCS / CTN | Export CTN | N.W. | G.W. | Unit Price |
|--------------------|----------------|-----------|------------------|--------|--------|------------|
| DS-LEDTWR-6M-144 | 28 x 20 x 8cm | 10 | 42.5 x 42 x 30cm | 13kg | 14kg | ≤ \$26.09 |
| DS-LEDTWR-6M-144C | 28 x 20 x 8cm | 10 | 42.5 x 42 x 30cm | 14kg | 15kg | ≤ \$27.10 |
| DS-LEDTWR-10M-180 | 28 x 20 x 11cm | 8 | 46.5 x 42 x 30cm | 15kg | 16kg | ≤ \$33.25 |
| DS-LEDTWR-10M-180C | 28 x 20 x 11cm | 8 | 46.5 x 42 x 30cm | 15.8kg | 16.8kg | ≤ \$34.15 |



> Decorative Light > Rope light string

DS-LEDRL-230V Series LED2 Wire Standard Rope Light

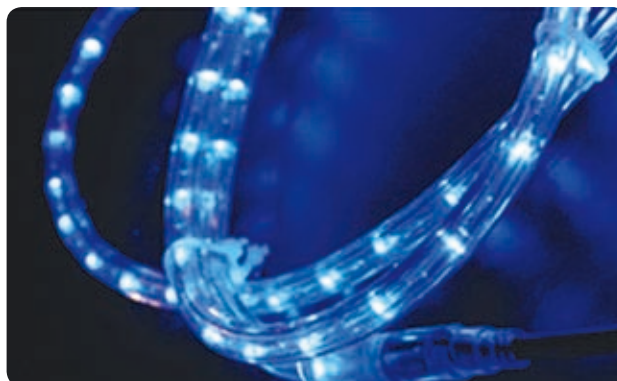
Outdoor and indoor use.

It's mainly used in building, venue, scenic spots, bridge, parks, etc.
Available in length of 45m, 50m, 90m and 100m in plastic reel.

Model: DS-LEDRL-50M-36-230V,
DS-LEDRL-36-100M-230V
DS-LEDRL-45M-24-230V,
DS-LEDRL-90M-24-230V

▼ Product Highlights

- Multi - Fix compatible
- Anti - UV, anti - static
- Super bright LED light
- Energy saving, low heat emission, long life - span
- Protection Class: IP44
- There are eight kinds of colors (Red, Yellow, Amber, Blue, Green, White, Warm white, Pink) and one kind of multi - color (R / Y / B / G).

**▼ Models****DS-LEDRL-50M-36-230V**

Dia.: 13mm
Length: 50m in plastic reel
Cut Unit: 2m
230V \ 115W \ 1800LEDs

DS-LEDRL-45M-24-230V

Dia.: 13mm
Length: 45m in plastic reel
Cut Unit: 3m
230V \ 69W \ 1080LEDs

DS-LEDRL-100M-36-230V

Dia.: 13mm
Length: 100m in plastic reel
Cut Unit: 2m
230V \ 230W \ 3600LEDs

DS-LEDRL-90M-24-230V

Dia.: 13mm
Length: 90m in plastic reel.
Cut Unit: 3m
230V \ 138W \ 2160LEDs.

▼ Power Kit

1.5m power cord with AC / DC adapter (DS-LEDPK-RL1.5M)

IP44 plug
1C connector
Male pin
Glue bottle
End cap
Blister package

**▼ Specifications**

| Model | Inner Box | PCS / CTN | Export CTN | N.W. | G.W. | Price |
|-----------------------|-----------|-----------|----------------|--------|--------|------------|
| DS-LEDRL-50M-36-230V | No | 1 | 28 x 28 x 22cm | 8.4kg | 8.9kg | ≤ \$130.66 |
| DS-LEDRL-100M-36-230V | No | 1 | 36 x 36 x 23cm | 17.4kg | 18.1kg | ≤ \$260.26 |
| DS-LEDRL-45M-24-230V | No | 1 | 28 x 28 x 22cm | 7.5kg | 8kg | ≤ \$92.28 |
| DS-LEDRL-90M-24-230V | No | 1 | 36 x 36 x 23cm | 15.6kg | 16.3kg | ≤ \$183.56 |

This quotation is average price of different colors, and there are differences among the prices.
Please visit our website www.Sign-in-China.com to get details for reference.

> Decorative Light > Rope light string

DS-LEDRL-230VCH Series LED 2 Wire Chasing Rope Light

Outdoor and indoor use.

It's mainly used in building, venue, scenic spots, bridge, parks, etc.
Available in length of 48m and 100m in plastic reel.

Model: DS-LEDRL-48M-36-230VCH,
DS-LEDRL-100M-36-230VCH,
DS-LEDRL-48M-24-230VCH,
DS-LEDRL-100M-24-230VCH

▼ Product Highlights

- Multi - fix compatible
- Anti - UV, anti - static, super bright LED light
- Energy saving, low heat emission, long life - span
- Protection Class: IP44
- There are eight colors (Red, Yellow, Amber, Blue, Green, White, Warm white, Pink) and one multi-color (R / Y / B / G).

**▼ Models****DS-LEDRL-48M-36-230VCH**

Dia.: 13mm
Length: 48m in plastic reel
Cut Unit: 4m
230V \ 55.2W \ 1728LED

DS-LEDRL-100M-36-230VCH

Dia.: 13mm
Length: 100m in plastic reel
Cut Unit: 4m
230V \ 115W \ 3600LED

DS-LEDRL-48M-24-230VCH

Dia.: 13mm
Length: 48m in plastic reel
Cut Unit: 4m
230V \ 55.2W \ 1152LED

DS-LEDRL-100M-24-230VCH

Dia.: 13mm
Length: 100m in plastic reel
Cut Unit: 4m
230V \ 138W \ 3400LED

▼ Power Kit is supplied separately

RLC-2W20M-OUT
RLC-2W50M-OUT
RLC-2W100M-IND

**▼ Specifications**

| Model | Inner Box | PCS / CTN | Export CTN | N.W. | G.W. | Price |
|-------------------------|-----------|-----------|----------------|--------|--------|------------|
| DS-LEDRL-48M-36-230VCH | No | 1 | 28 x 28 x 22cm | 8.4kg | 8.9kg | ≤ \$126.67 |
| DS-LEDRL-100M-36-230VCH | No | 1 | 36 x 36 x 23cm | 17.4kg | 18.1kg | ≤ \$262.63 |
| DS-LEDRL-48M-24-230VCH | No | 1 | 28 x 28 x 22cm | 8.4kg | 8.9kg | ≤ \$101.17 |
| DS-LEDRL-100M-24-230VCH | No | 1 | 36 x 36 x 23cm | 17.4kg | 18.1kg | ≤ \$209.48 |

This quotation is average price of different colors, and there are differences among the prices.
Please visit our website www.Sign-in-China.com to get details for reference.

> Decorative Light > LED strip

LED Strip

- Long service time: 50000 hours
- No flickering
- No RF interference
- High brightness

SMD 5050 150LED / 5M / Reel DC12V**▼ Specifications****Input:** 12V DC**Light Source:** SMD5050 150pcs / 5m. 3 LEDs Cuttable**Power:** 22.5W**Beam Angle:** 120 degree**Dimension:** L5000 x W10mm**PCB Color:** Yellow / White

3M Double Side Tape, 15cm power cable at one end

Certification: CE / ROHS**Packing:** 5m / reel / anti - static bag**Minimum Order:** 1 Reel**▼ Price List**

| IP Grade | Color | Unit Price |
|---------------------|-----------------------------|-----------------|
| Non - waterproof | Warm white / Pure white | ≤ \$31.7 / reel |
| | Green / Blue / Yellow / Red | ≤ \$32 / reel |
| IP65 Waterproof II | Warm white / Pure white | ≤ \$36.7 / reel |
| | Green / Blue / Yellow / Red | ≤ \$36.7 / reel |
| IP67 Waterproof III | Warm white / Pure white | ≤ \$39 / reel |
| | Green / Blue / Yellow / Red | ≤ \$39 / reel |

**SMD 5050 300LEDs / 5M / Reel DC12V****▼ Specifications****Input:** 12V DC**Light Source:** SMD5050 300pcs / 5m. 3 LEDs Cuttable**Power:** 45W**Beam Angle:** 120 degree**Dimension:** L5000 x W10mm**PCB Color:** Yellow / White

3M double side tape, 15cm power cable at one end

Certification: CE / ROHS**Packing:** 5m / reel / anti - static bag**Minimum Order:** 1 Reel**▼ Price List**

| IP Grade | Color | Unit Price |
|---------------------|-----------------------------|-----------------|
| Non - waterproof | Warm white / Pure white | ≤ \$52.9 / reel |
| | Green / Blue / Yellow / Red | ≤ \$52.9 / reel |
| IP65 Waterproof II | Warm white / Pure white | ≤ \$57.9 / reel |
| | Green / Blue / Yellow / Red | ≤ \$57.9 / reel |
| IP67 Waterproof III | Warm white / Pure white | ≤ \$62.8 / reel |
| | Green / Blue / Yellow / Red | ≤ \$62.8 / reel |

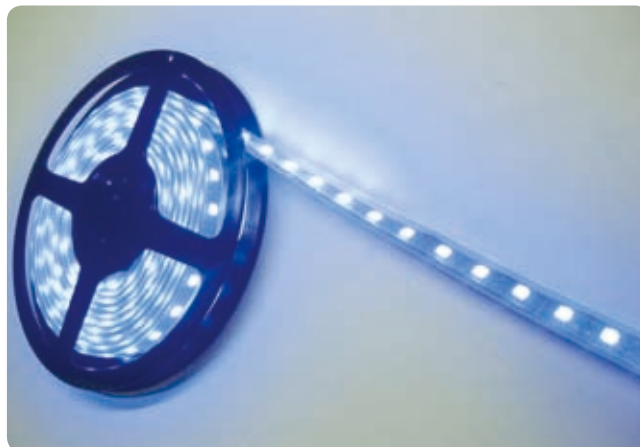
> Decorative Light > LED strip

SMD 3528 300LED / 5M / Reel DC12V**▼ Specifications****Input:** 12V DC**Light Source:** SMD3528 300pcs / 5m. 3 LEDs Cuttable**Power:** 18W**Beam Angle:** 120 degree**Dimension:** L5000 x W8mm**PCB Color:** Yellow / White

3M double side tape, 15cm power cable at one end

Certification: CE / ROHS**Packing:** 5m / reel / anti - static bag**Minimum Order:** 1 Reel**▼ Price List**

| IP Grade | Color | Unit Price |
|---------------------|-----------------------------|------------------|
| Non - waterproof | Warm white / Pure white | ≤ \$19.83 / reel |
| | Green / Blue / Yellow / Red | ≤ \$19.83 / reel |
| IP65 Waterproof II | Warm white / Pure white | ≤ \$24.79 / reel |
| | Green / Blue / Yellow / Red | ≤ \$24.79 / reel |
| IP67 Waterproof III | Warm white / Pure white | ≤ \$29.75 / reel |
| | Green / Blue / Yellow / Red | ≤ \$29.75 / reel |

**SMD 3528 600LED / 5M / Reel DC12V****▼ Specifications****Input:** 12V DC**Light Source:** SMD3528 600pcs / 5m. 3 LEDs Cuttable**Power:** 36W**Beam Angle:** 120 degree**Dimension:** L5000 x W8mm**PCB Color:** Yellow / White3M double side tape,
15cm power cable at one end**Certification:** CE/ROHS**Packing:** 5m / reel /

anti - static bag

Minimum Order: 1 Reel**▼ Price List**

| IP Grade | Color | Unit Price |
|---------------------|-----------------------------|------------------|
| Non - waterproof | Warm white / Pure white | ≤ \$32.4 / reel |
| | Green / Blue / Yellow / Red | ≤ \$32.4 / reel |
| IP65 Waterproof II | Warm white / Pure white | ≤ \$37.36 / reel |
| | Green / Blue / Yellow / Red | ≤ \$37.36 / reel |
| IP67 Waterproof III | Warm white / Pure white | ≤ \$42.31 / reel |
| | Green / Blue / Yellow / Red | ≤ \$42.31 / reel |